



STRUCTURAL CONSULTANCY SERVICES



AMBICA ASSOCIATES

Trusted by Industry Leaders | On-Time Project Delivery | Quality-Driven Approach

About Us

Ambica Associates is a premier civil and structural engineering firm committed to delivering innovative, cost-effective, and sustainable structural design solutions. Led by a Chartered Engineer with The Institute of Engineers (India), we specialize in RCC and Steel structures, including Pre-Engineered Buildings (PEB)

Our firm is **registered with:**

**Vadodara Municipal
Corporation (VMC)**

**Vadodara Urban Development
Authority (VUDA)**

Our Experience & Expertise



Industry Knowledge: Extensive experience in RCC buildings, steel structures, PEB, retaining walls, foundation designs, and more



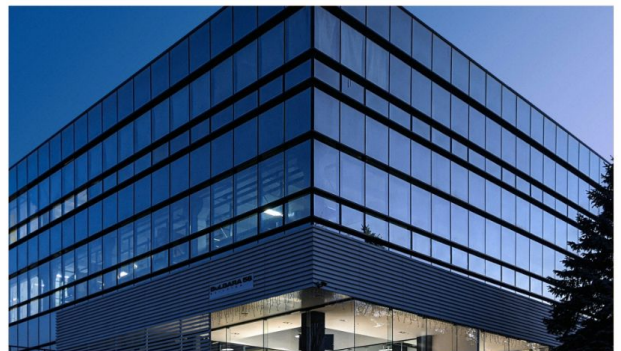
Software & Technology: Expertise in industry-leading structural analysis and design software for optimal engineering solutions.



Code Compliance: Proficiency in Indian and international design codes, ensuring structural safety and regulatory compliance



Project Portfolio: A diverse range of projects spanning commercial, industrial, and infrastructure sectors



Our Mission

To provide high-quality, reliable, and efficient structural design solutions that meet client expectations while ensuring structural integrity, sustainability, and cost-effectiveness.

Our Vision

To be recognized as a trusted leader in civil and structural engineering, setting industry benchmarks in innovation, quality, and customer satisfaction

Our Services

At Ambica Associates, we offer a comprehensive range of civil and structural engineering services, ensuring that every project is designed with safety, efficiency, and cost-effectiveness in mind. Our expertise in structural design and analysis covers RCC and Steel structures, including Pre-Engineered Buildings (PEB) for industrial, commercial, and residential projects. We specialize in seismic and wind load analysis, foundation and substructure design, ensuring stability and durability.

Our structural drawing and detailing services include general arrangement drawings (GA), reinforcement detailing, fabrication drawings, connection design, and bar bending schedules (BBS), providing precise execution and seamless construction. We also excel in designing retaining structures and earth retention systems, including cantilever and counterfort retaining walls, sheet pile walls, diaphragm walls, gabion walls, and gravity walls.

In the field of water and utility structures, we provide design solutions for underground (UG) tanks, STP tanks, water retaining structures, and overhead water tanks (OHT),

ensuring structural integrity and long-term performance. Our industrial and infrastructure engineering services cover pipe racks, equipment supporting structures, machine foundations, chimneys, towers, warehouses, and factory structures, addressing complex engineering challenges with precision.

We also specialize in retrofitting and strengthening of existing structures through structural audits, rehabilitation design, and retrofitting of RCC and steel structures, enhancing their strength and service life. Additionally, our project consultation and compliance services include structural stability certification, peer review, proof checking, and compliance with IS, AISC, and MBMA standards, along with value engineering to optimize costs without compromising quality.

At Ambica Associates, we are committed to delivering high-quality engineering solutions tailored to meet the unique needs of every project. Our goal is to provide designs that are not only technically sound but also sustainable and cost-effective, ensuring success at every stage of development.

Why Choose Us?

At **Ambica Associates**, we stand out as a trusted name in structural engineering, offering **innovative, cost-effective, and sustainable solutions** tailored to your needs. Here's why we are the right choice for your next project:

Expert-Led Team – Our firm is led by a Chartered Engineer from The Institute of Engineers (India) with over five years of experience in designing RCC and Steel structures, including Pre-Engineered Buildings (PEB).

Regulatory Compliance & Approvals – We are registered with GIDC, VMC, and VUDA, ensuring hassle-free approvals and strict compliance with industry regulations.

Cutting-Edge Technology – Utilizing advanced structural design software such as STAAD.Pro, ETABS, SAFE, MAT 3D, RAM Connection, and RCDC, we ensure precision, efficiency, and adherence to IS Code, AISC, and MBMA standards.

Comprehensive Services – From structural design, detailing, and retrofitting to strengthening, rehabilitation, and proof checking, we provide end-to-end solutions for residential, commercial, industrial, and infrastructure projects.

Client-Centric Approach – We prioritize customized designs, transparent communication, and timely project delivery, ensuring an efficient and stress-free experience for our clients.

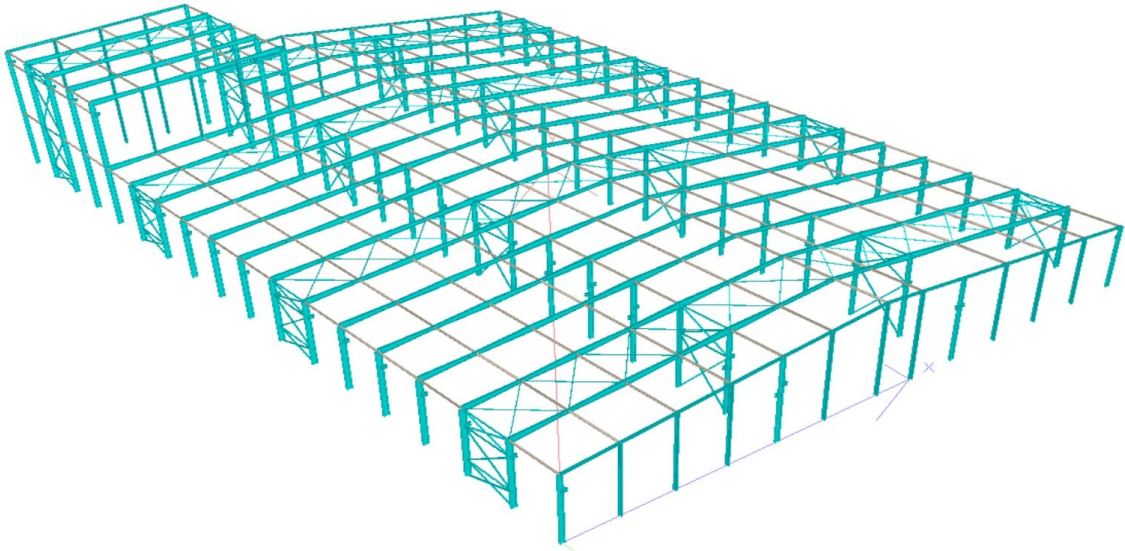
Cost-Effective & Sustainable Solutions – Through value engineering and structural stability certification, we provide optimized, durable solutions that enhance safety without exceeding budgets.

At Ambica Associates, we blend modern engineering with sustainability and long-term durability to deliver high-quality, future-ready structure. Let's build something remarkable together!



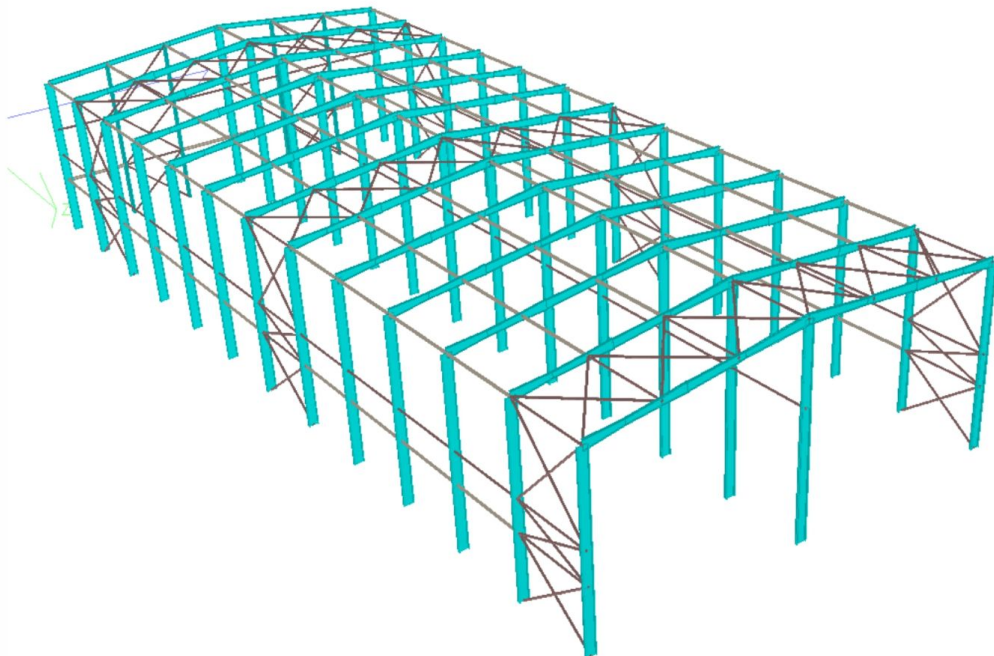
Project Location :- Rajasthan

| | | | |
|-------------------|--|--------------|------------------|
| Type of Structure | PEB Structure | Tonnage | 500 MT |
| Project Area | 11045 sqm. | Design Code | AISC, AISI, MBMA |
| Crane Capacity | 4 Nos- 5 MT | Wind Speed | 47 M/S |
| Clear Height | Low Bay - 10.6 meter & High Bay - 22 meter | Seismic Zone | II |



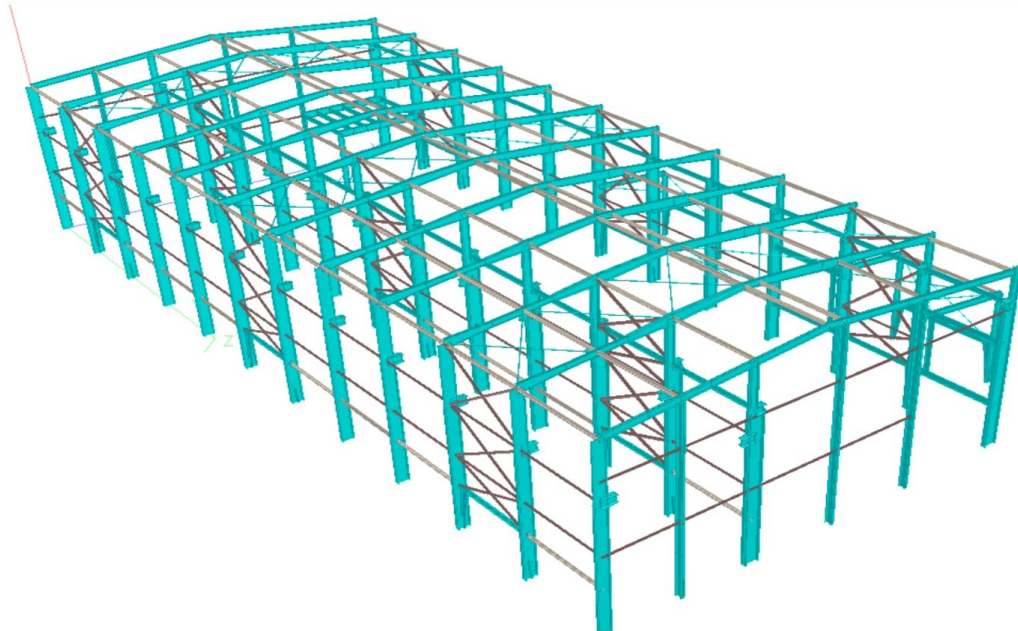
Project Location :- Bhilwara, Rajasthan

| | | | |
|-------------------|---------------------|--------------|------------------|
| Type of Structure | PEB Structure | Tonnage | 340 MT |
| Project Area | 6100 sqm. | Design Code | AISC, AISI, MBMA |
| Crane Capacity | NA | Wind Speed | 47 M/S |
| Clear Height | 17 Meter & 14 Meter | Seismic Zone | III |



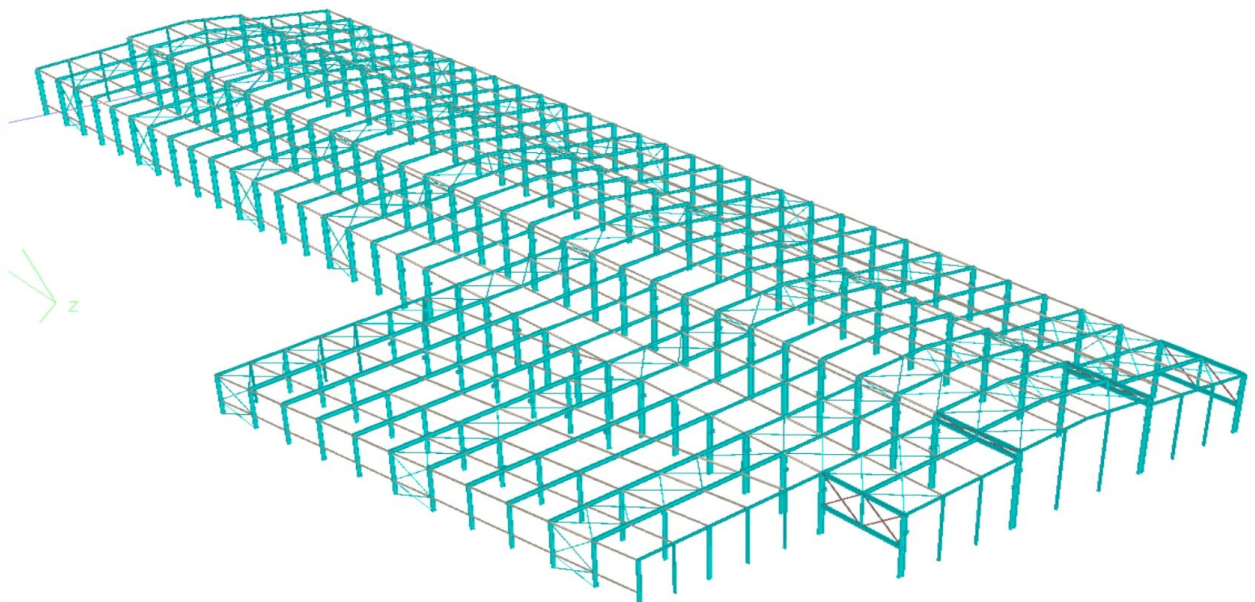
Project Location :- Vadodara, Gujarat

| | | | |
|--------------------------|---------------|---------------------|---|
| Type of Structure | PEB Structure | Tonnage | 250 MT |
| Project Area | 2400 sqm. | Design Code | AISC, AISI, MBMA, WIND CAL. IS 875 – 2015 |
| Crane Capacity | 25 MT & 50 MT | Wind Speed | 39 M/S |
| Clear Height | 8 meter | Seismic Zone | III |



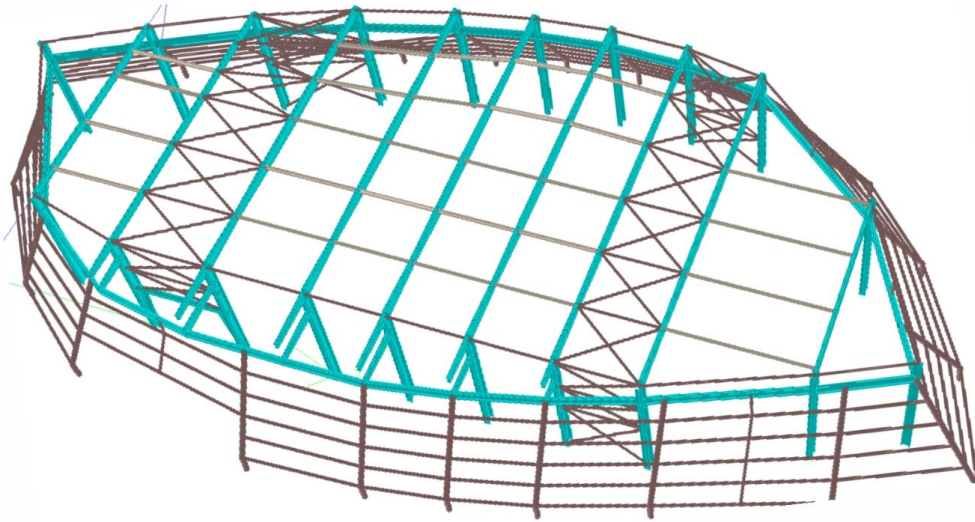
Project Location :- Halol, Vadodara, Gujarat

| | | | |
|--------------------------|--|---------------------|------------------|
| Type of Structure | PEB Structure | Tonnage | 1040 MT |
| Project Area | 19650 sqm. | Design Code | AISC, AISI, MBMA |
| Crane Capacity | 8 Nos-10 MT, 2 Nos-20 MT & 1 Nos - 40 MT | Wind Speed | 39 M/S |
| Clear Height | High bay -14 meter & Low bay – 8 meter | Seismic Zone | III |



Project Location :- Surat, Gujarat

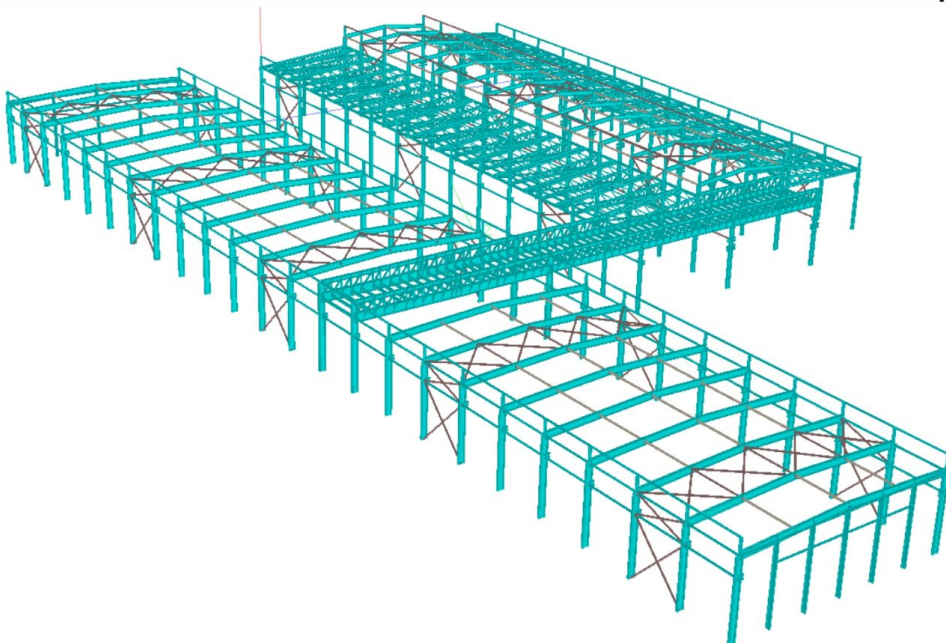
| | | | |
|-------------------|-------------------------------|--------------|----------------|
| Type of Structure | Sport Complex (PEB Structure) | Tonnage | 120 MT |
| Project Area | 230 sqm. | Design Code | IS 800, IS 875 |
| Crane Capacity | NA | Wind Speed | 39 M/S |
| Clear Height | 10 meter | Seismic Zone | III |



Project Location :- Kishangarh, Rajasthan

| | | | |
|-------------------|--|--------------|----------------|
| Type of Structure | Production Unit (PEB Structure) | Tonnage | 1800 MT |
| Project Area | 8835 sqm. | Design Code | AISC,AISI,MBMA |
| Crane Capacity | 10 Nos - 5 MT | Wind Speed | 47 M/S |
| Clear Height | Low bay - 10 meter & High bay - 13.3 meter | Seismic Zone | II |

Proof Check by:





LET'S BUILD THE FUTURE TOGETHER!

At **Ambica Associates**, we are dedicated to delivering **innovative, safe, and cost effective structural solutions** that turn your vision into reality. Whether you need **structural design, consultation, or project assessment**, our team is here to support you with **expert guidance and advanced engineering solutions** tailored to your needs.

Let's create stronger, smarter, and safer structures together! Contact us today!

Get in touch.

Office Address:

📍 122 Por Industrial Park,
Bh. Sahyog Hotel, Next to GIDC,
Por, Vadodara, Gujarat 391243

☎ +91 7069386723
✉ info@ambicaassociates.in
🌐 www.ambicaassociates.in

📷 @ambicaassociate

🌐 [company/ambicaassociates/](https://www.linkedin.com/company/ambicaassociates/)